

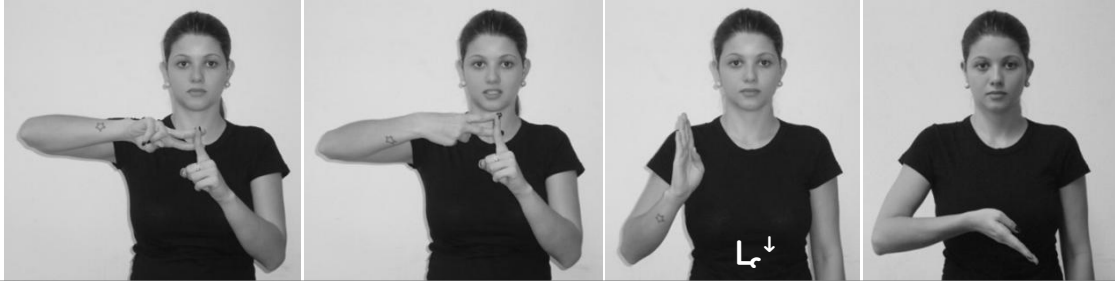
Dobrado Sustenido

.I.II.□□□□□□□□.I.II.□□□□□□□□ .I.II.□□□□□↑



Bemol

∕□□□□↓



Dobrado Bemol

.I.II.□□□□□□□□.I.II.□□□□□□□□ ∕□□□□↓



Fórmula de compasso

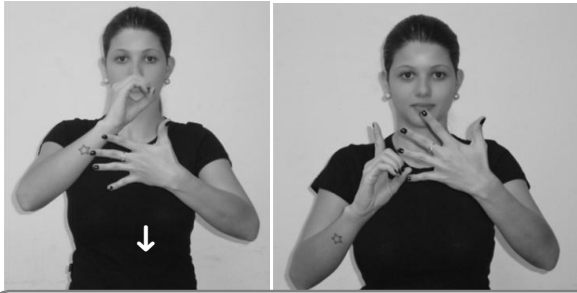
∕∕□□□□-∕↓



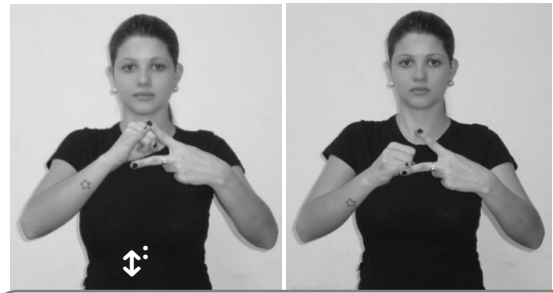
Tom

.I.II.□□□□^{2.4-2.3}

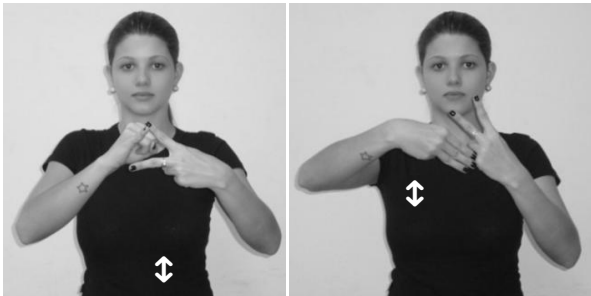




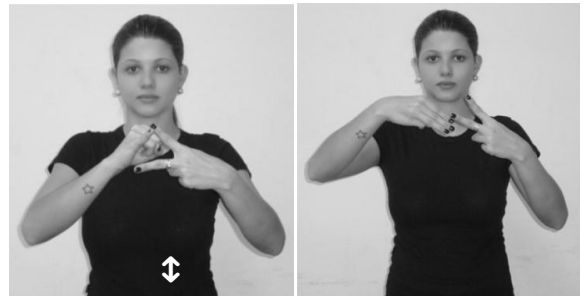
Acorde diminuto
 1. 2. 3. 4. 5. - ↓ 1. 2. 3. 4. 5. 1⁵⁻¹



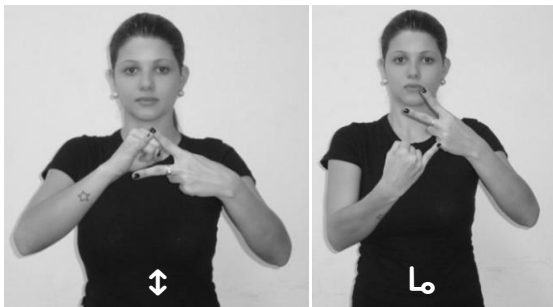
Intervalo musical
 1. 2. 3. 4. 5. - ↓



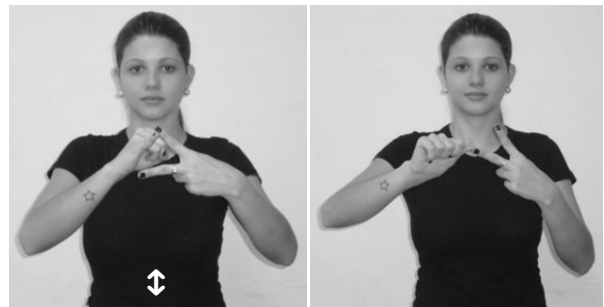
Intervalo menor
 1. 2. 3. 4. 5. 2. 3. 4. 5. - ↓ 1. 2. 3. 4. 5. 1



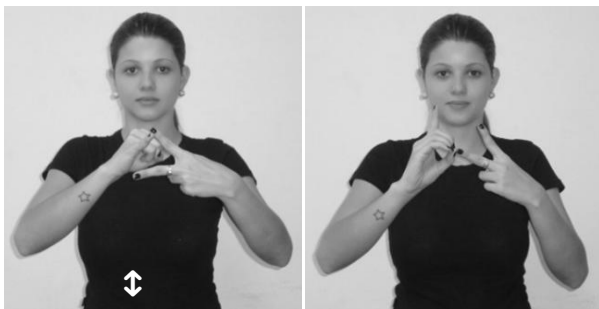
Intervalo maior
 1. 2. 3. 4. 5. 2. 3. 4. 5. - ↓ 1. 2. 3. 4. 5. 3-2



Intervalo justo 1. 2. 3. 4. 5. - ↓
 1. 2. 3. 4. 5. 3. 4. 5. 1



Intervalo aumentado
 1. 2. 3. 4. 5. - ↓ 1. 2. 3. 4. 5. 3-1



Intervalo diminuto
 1. 2. 3. 4. 5. - ↓ 1. 2. 3. 4. 5. 3-1



Ictus inicial
 1. 2. 3. 4. 5. 1-2



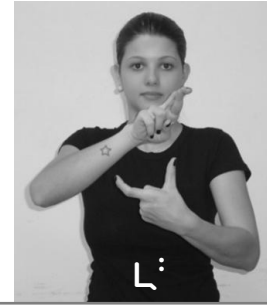
Ictus final

$\setminus \Gamma^{\text{m}} . \lambda . \Theta \Theta \square \square^{2-2}$



Anacruse

$\setminus \Gamma^{\text{m}} . \lambda . \Theta \Theta \square \square^{1} \text{L} < \text{L}$



Tético

$\setminus \Gamma^{\text{m}} . \lambda . \Theta \Theta \square \square^{1} \text{L} \text{L}^{\text{i}}$



L



$\overline{\text{T}}$

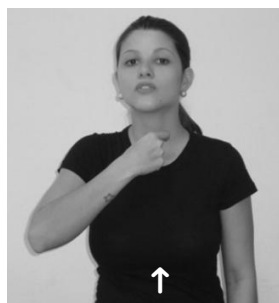
Acefálo

$\setminus \Gamma^{\text{m}} . \lambda . \Theta \Theta \square \square^{1} \square^{2} . : \setminus \Gamma^{\text{m}} \text{L}^{\text{m}} \Theta \Theta \square \square^{1} \square \text{L} \overline{\text{T}}$



Melodia

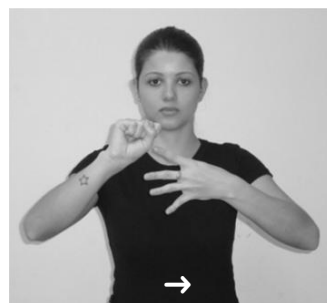
$\text{L}^{\text{m}} \Gamma^{\text{m}} \Theta \Theta \square \square^{2} \text{L}^{\perp}$



\uparrow

Voz

$\setminus \setminus \Theta \Pi \uparrow$



\rightarrow

Soprano

$\text{L}^{\text{m}} . \Theta \Theta \square \square^{2} \text{L} \rightarrow$